



MITSUMI GROUP OF COMPANIES

# AFFORDABLE SUSTAINABLE AND ECO FRIENDLY HOUSING



In India, Mitsumi Housing Pvt. Ltd. is working as a contract-based company having capacity to set – up facility for large scale projects in the state. We have acquired 'Patented Technology' for using 'Cold Formed Light Gauge Steel Frame Technology' for constructing Eco-Friendly Housing.

Mitsumi Housing Pvt. Ltd. is a perfect blend of entrepreneurship and technocrats. We have well experienced and dedicated team with clear vision that strengthens our company. We clearly understand that to buy a house remains to be one of the main aspirations of any person.

**Aims to provide affordable low-cost housing for people of India with support of the Government and developing a culture of sustainable eco-housing construction integrated with natural resources.**

Mitsumi Housing Pvt. Ltd. Strongly supports to achieve the goal of "Housing For All" by implementing highly innovative, modern and Housing by non-conventional fast-track construction method with exceptional operational efficiencies, stable and committed execution.

**Committed to adopt self-sustainable seismic resistant technologies for construction of affordable eco-friendly houses**

Our parent company, M/s. Mitsumi Distribution is a Multinational company established as a Free Zone Company of Dubai in the year 2006. The company has business verticals in Infrastructure, Institutional Buildings, Residential Building, Hospitality (Hotel), Solar Energy, Banking Sector & Distribution Industry. The company has footprint in Kenya, Tanzania, Ethiopia, Uganda, Rwanda, Nigeria, Ghana, Cameroon, Algeria. UAE, Oman, Qatar, Bahrain, Kuwait & Jordan.

Mitsumi Housing Pvt. Ltd. is representative company of Mitsumi Distribution FZCO which have an extensive interest in field of construction of housing projects, logistics and hospitality. The company understands the market of Indian construction industry.

The company also undertakes its R&D Section which will upgrade the technology as per Indian Demographics. We are also envisioned to generate huge local employment by transforming normal labour to skill labour, develop Sustainable communities, reduced carbon emission with solar energy.

## OUR VERTICALS

We ardently adopt Self-Sustainable Technologies for Affordable Eco-Friendly houses by using Renewable Energy Resources which includes

- ▶ Community Bio-Toilets
- ▶ Solar Roof-Top / Mini Solar Grids
- ▶ Waste Management System
- ▶ Water Recycling System

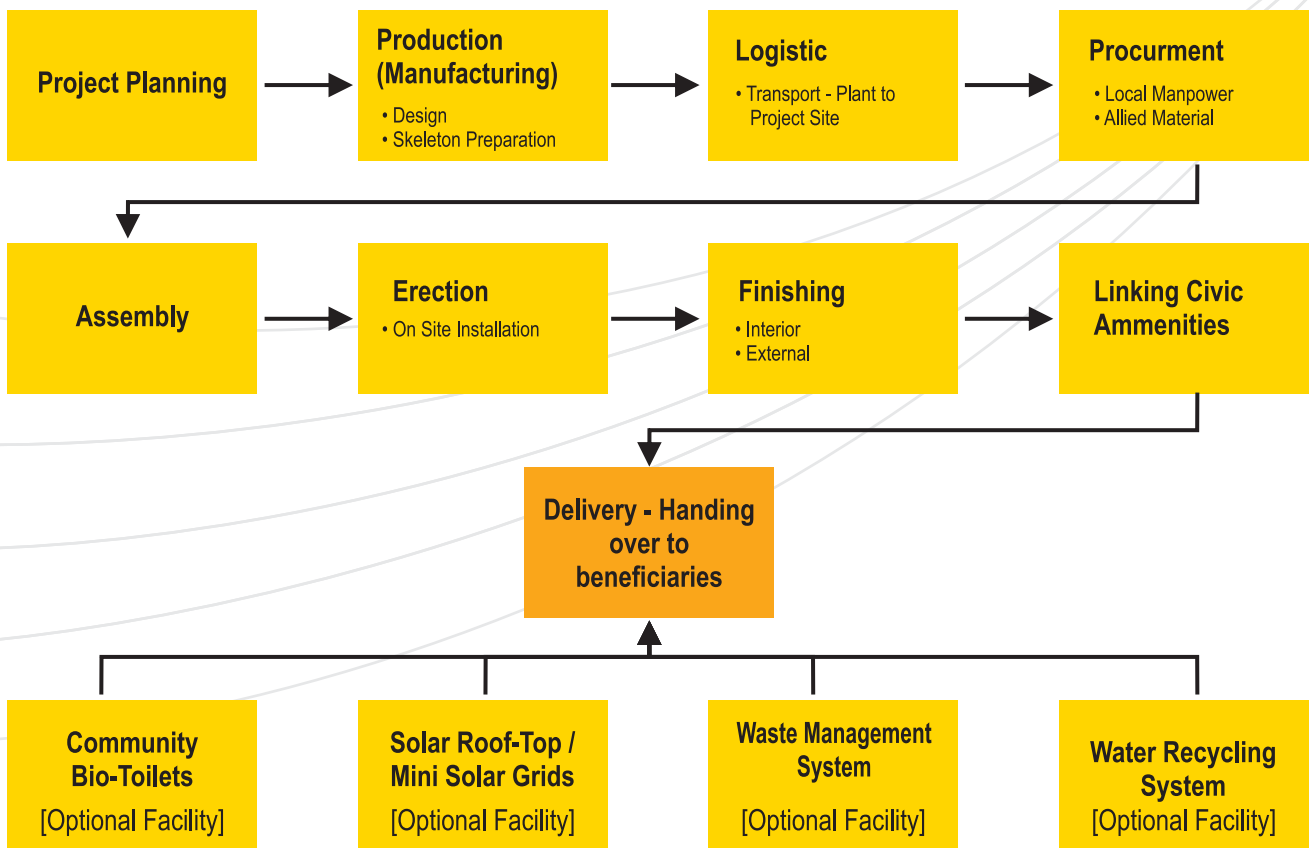




# ABOUT COLD FORMED LIGHT GAUGE STEEL FRAME TECHNOLOGY

Cold- Formed Light Gauge Steel Frame Technology is 300% Faster, 20% Cheaper & 100% More Green than conventional methods of construction with better 'Strength to Weight' ratio than concrete; seismic resistance, wind, pest & mould durable; completely non-combustible, environmentally controlled production technique, designed, accurate within a half millimetre and highly regulated.

## How to make Sustainable Houses by using Cold Formed Light Gauge Steel Frame Construction Method:



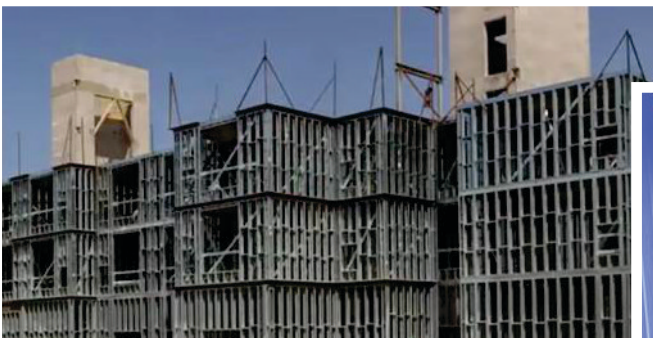
The technology is labour friendly with reduced need for high skilled trades and heavy equipment. Cold-Formed Light Gauge Steel Frame Technology is highly sustainable, 100% recyclable with production of less than 1% wastage as compared to conventional construction technologies





## ADVANTAGES OF COLD-FORMED LIGHT GAUGE STEEL FRAME TECHNOLOGY ARE

- Faster time to manufacture steel frame on site or off site
- Less time and skill required for assembling the structural steel frame
- All the steel frames have pre-holes made for attaching fasteners and all steel parts are levelled and labelled to avoid confusion; hence it contains no room for errors which saves time in assembling.
- Management and time saving due to its adaptability on creating it at factory or at site; as a result, the assembly and production could be done side by side or faster assembly could be done by employing more members and getting pre-made steel frames from factory in bulk



# Benefits

**Versatile**

**Quality Finish**

**Light Weight**

**Labour Friendly**

**Low - carbon  
Emission**

**Fast: on site  
envelope  
construction**

**Precise: Accurate up  
to a half millimetre**

**Design-Led: 80% of  
design & build  
process**

**Sustainable: Less  
than 1% waste,  
100% Recyclable**

**Durable: Wind,  
Earthquake, Pest &  
Mould Resistant**

**Strong: Better  
"Strength to Weight"  
ratio than concrete**

**Longevity: 75%  
reduced building  
maintenance over  
time**

**Contaminates:  
Reduced onsite paints,  
solvents, adhesives,  
fuel and lubricants**



MITSUMI GROUP OF COMPANIES

**Mitsumi Housing Pvt Ltd**

D-1108, The First, B/h. Keshavbaugh Party Plot,  
The First Avenue Road, Off. 132 Ft. Road, Vastrapur,  
Ahmedabad-380015, Gujarat, INDIA.  
Phone: +91 79 40082243, 79 48010642

Email: [info@mitsumihousing.com](mailto:info@mitsumihousing.com)

Website: [www.mitsumihousing.com](http://www.mitsumihousing.com)